

FX₂NC-ENET-ADP

FX takes the next step...

...FX Ethernet is here!

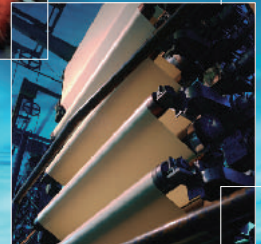
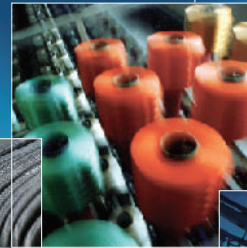
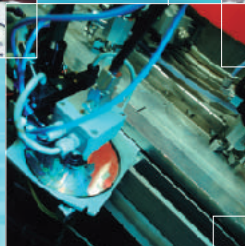


- Slim size
- Integrates easily with user applications
- PLC maintenance via LAN
- Data collection/Recipe exchange

FX₂NC-ENET-ADP



Ethernet



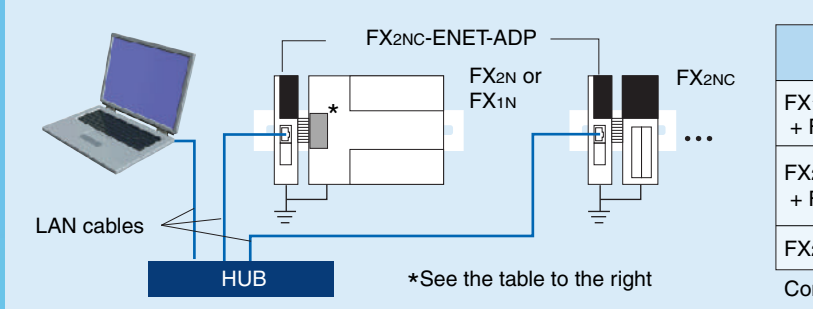
Ethernet adapter



The Ethernet FX₂NC-ENET-ADP is the latest edition to the high quality networking solutions from the FX micro PLC product range.

Specifications

System configuration



PLC	Ethernet adapter	LAN cable
FX ₁ N PLC + FX ₁ N-CNV-BD*	FX ₂ NC-ENET-ADP	Twisted pair cable Category 5(e) STP or 3 STP (straight cable)
FX ₂ N PLC + FX ₂ N-CNV-BD*		
FX ₂ NC PLC		

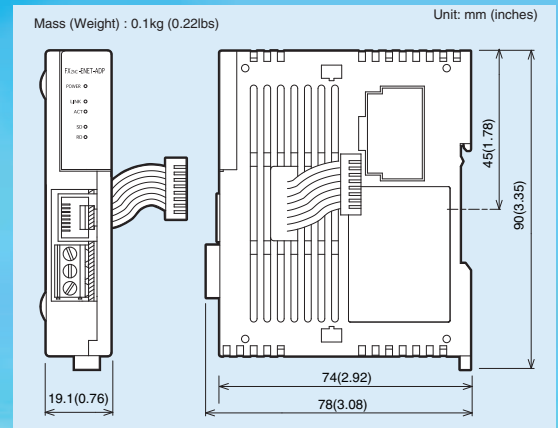
Compatible version of GX developer Ver. 8.12N or later

Specifications

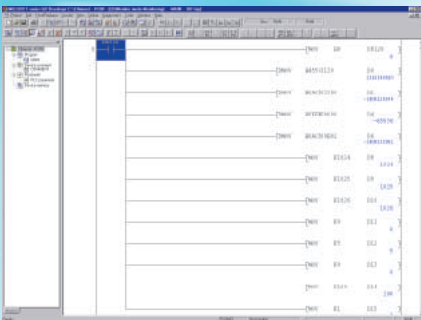
Protocol	TCP/IP
Transmission media	10BASE-T
Baud Rate	10Mbps
Connector Type	RJ-45
Cable	Category 5(e) or 3 STP
Virtual COM Driver Software	Tactical Software, Serial /IP Ver. 3.10 or 4.03
CE/UL standard	EMC (EN61000-6-2, EN61000-6-4, EN61131-2)
Current consumption	135mA at 5V DC (supplied by PLC)
Programming Software	GX Developer (Ver. 8.12N or later)
Applicable PLC	FX ₁ N, FX ₂ N(C)

The company name and the product name described in this manual are the registered trademarks or trademarks of each company.

Dimensions



Application



1. GX Developer

•Program Transfer

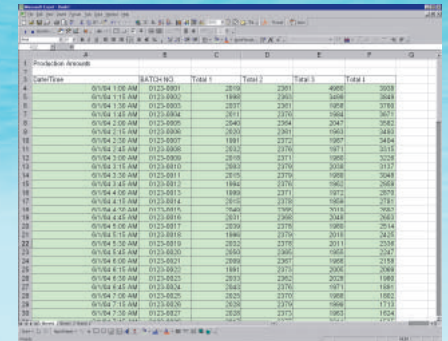
PLC programs are seamlessly transferred from GX Developer (Ver. 8.12N or later).

•Program Monitor

FX devices or data memory locations can be monitored or changed from GX Developer (Ver. 8.12N or later).

2. User Application

MX Component-support for ActiveX user applications.



Safety Warning

To ensure proper use of the products, please be sure to read the instruction manual prior to use.

MITSUBISHI ELECTRIC CORPORATION

HEAD OFFICE: 1-8-12, OFFICE TOWER Z 14F HARUMI CHUO-KU 104-6212, JAPAN